
	Document: Technical Description Version: 1 Status: actual Author: bs Date: 01-12-07 Approved: ro Date: 01-12-07 File: PC	EAM 114 GAC to DEUTZ EMR Interface Module GAC PIB4072 (March 2001)	 Tel.: +41-62-916 50 30 Fax: +41-62-916 50 35 www.huegli-tech.com
-----------------------------------------------------------------------------------	-------------------------------------------------------------------------------------------------------------------------------------------------------------------------------------------------	------------------------------------------------------------------------------------------------------	---------------------------------------------------------------------------------------------------------------------------------------------------------------

EAM114 GAC to DEUTZ EMR Interface Module

Introduction

The EAM114 is an electronic interface module that provides conditioning of electronic signals to operate the DEUTZ EMR engine control system. A typical application is where a GAC auto synchronizing and load sharing system is to be connected to the DEUTZ EMR engine control system.

The DC supply for the interface comes from the common battery source for the governor and the accessory controls. The input to the module (Terminal D) is typically at 5.0V DC, which represents the auto-sync and load sharing outputs analog signals. The output of the EAM114 to the EMR engine control is 2.5V DC with the EMR 5.0V DC reference connected to Terminal 2.

Wiring

See Wiring Diagram.

Note 1: All four (4) connections to the EMR control system are required.

Note: The common battery minus connection between the EMR, EAM114, and the GAC auto-sync and load sharing system should be as direct as possible electrically (minimum voltage difference).

Specifications

Input impedance (Terminals A & B)	20K ohms
Input DC voltage (nominal) (Terminals A & B)	5.0V DC
Output impedance (Terminals 3 & 4)	5K ohms
Nominal output voltage (Terminals 3 & 4)	2.50V DC
Output voltage range (Terminals 3 & 4)	0.5 to 4.5V DC
Transfer function	-2 volts/ volt
DC supply voltage range (Terminals 1 & 4)	15 – 32V DC
DC supply current (Terminals 1 & 4)	20 mA
Temperature range	-40° to +85°C

Note: Customer must specify 12V or 24V operation.



Engine
Governing
Systems

Document: Technical Description
Version: 1
Status: actual
Author: bs **Date:** 01-12-07
Approved: ro **Date:** 01-12-07
File: PC

EAM 114
GAC to DEUTZ EMR
Interface Module

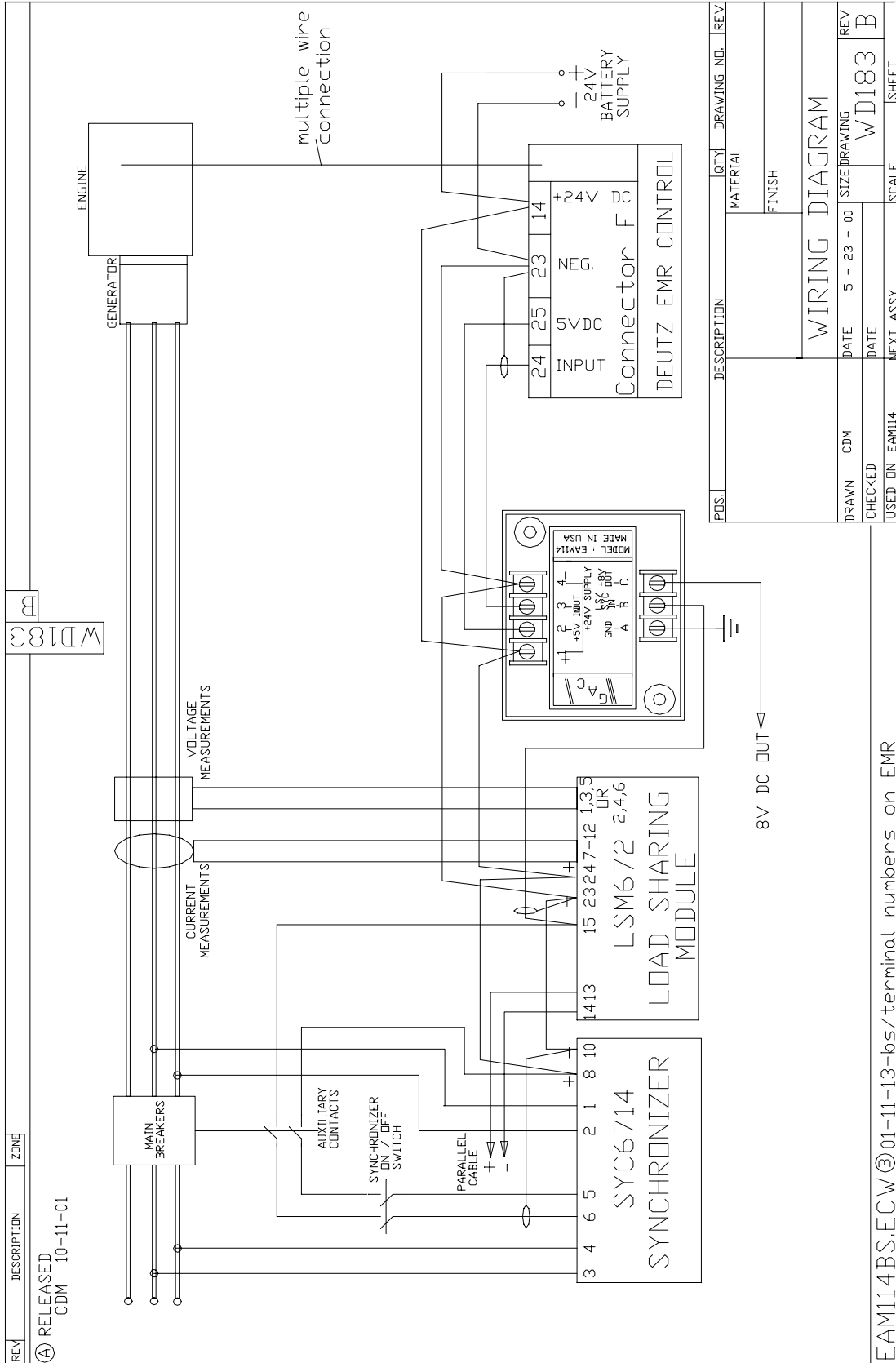
GAC PIB4072 (March 2001)



HUEGLI TECH LTD
 SWITZERLAND

Tel.: +41-62-916 50 30
 Fax: +41-62-916 50 35
 www.huegli-tech.com

Wiring Diagram WD183B





Engine
Governor
Systems

Document: Technical Description
Version: 1
Status: actual
Author: bs **Date:** 01-12-07
Approved: ro **Date:** 01-12-07
File: PC

**EAM 114
GAC to DEUTZ EMR
Interface Module**

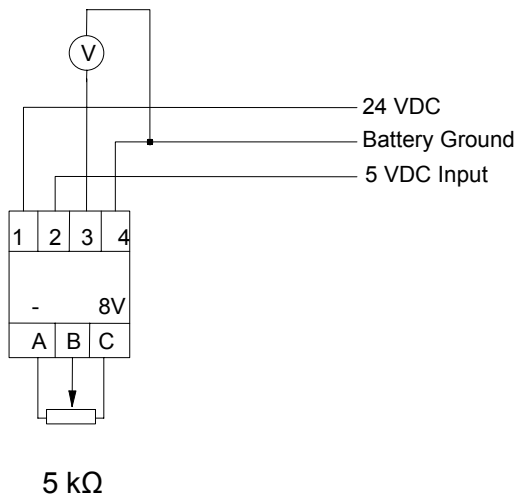
GAC PIB4072 (March 2001)



HUEGLI TECH LTD
SWITZERLAND

Tel.: +41-62-916 50 30
Fax: +41-62-916 50 35
www.huegli-tech.com

Testing EAM114



DC Voltage Input at "B"	DC Voltage Output at "3"
0	5.7
2	5.7
3	5.7
4	4.5
5	2.5
6	0.5
7	0.45

Jeenda Machinery Co., Ltd.

TEL: +86 577 88955573 FAX: +86 577 56667563

EMAIL: parts@powergensetparts.com WEB: <http://www.powergensetparts.com>

ADD: No. 1402 Unit 15 Group 2 Xintianyuan, Xincheng Wenzhou 325000, Zhejiang China

Professional manufacturer of Stamford AVR, Leroysoner AVR R250, Marthon AVR, Siemens AVR, Deep Sea Starting System, Cummins speed control, Load Sharing module, Cummins Actuators, GAC Actuators, Caterpillar AVR VR6, Mecc Alte AVR SR7, rectifier SSAYEC432, Diode Bridge 330-25777, Blaser AVR AVC63-7, Kutai AVR EA05A, SS053, MARELLI AVR M16FA655A, DSE5120, DSE5220, DSE5110, DSE501K, DSE704...etc.