

GU301A Genset Controller

DESCRIPTION

GU301A is a manual controller of generating set (Genset), which has been designed to manually start and stop the genset via a key switch on the front panel, LED display the running status which located on the front panel. Controller with protected function to ensure engine will not damage during operating. With using Standard shell DIN96 shell. All connected terminals are pin-link type with screw locked, which is good for connecting, dismantling, maintenance and replacing.

CONTROLLER FRONT PANEL

Key switch with three position

- **“O” STOP**, On the “O” position controller will be power off.
- **“I” RUN**, On the “I” position controller will be power on, and fuel solenoid output relay closed.
- **“II” START**, The key is Rotated to position “II” by hand, start relay closed to crank . Once the engine has already started, key switch return to the “I” position and the power of the starter is cut off immediately, meanwhile the key switch will not be permitted to rotate to position “II” as to interior electrical interlock.

MUTE KEY



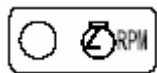
Shield from buzzer, but the fault indicated LED Light still be illuminated.

PROTECTION AND INDICATOR



The right light is green when the controller is power on; the left light is red means Charge failure,.

The charger of engine out of operation, LED light flash with buzzer alarm, but engine will not shut down.



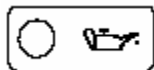
Over-speed indicator

controller is with interior frequency inspection instrument. When frequency is over 57HZ(Rated frequency: 50HZ; when Rated frequency is 60HZ, Faults preset value is 67HZ), indicator lighting with buzzer alarm, and engine will be shut down.



High temperature indicator

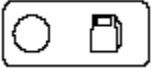
When the water temperature is raising to higher than safety value ,indicator lighting with buzzer alarm ,and engine will be shut down.



Low oil pressure indicator

when oil pressure has not been build-up yet after engine safety delay time, indicator lighting with buzzer alarm, and engine will be shut down.

GU301A Genset Controller



Low fuel indicator

When fuel level being low, indicator lighting with buzzer alarm ,and engine will be shut down.

Specification

DC Source

Voltage Range: 12V/24V (9~32V)

Frequency: 3~70HZ (100V voltage 300V)

Start Relay Output: 16A/30VDC

Running Relay Output: 16A/30VDC

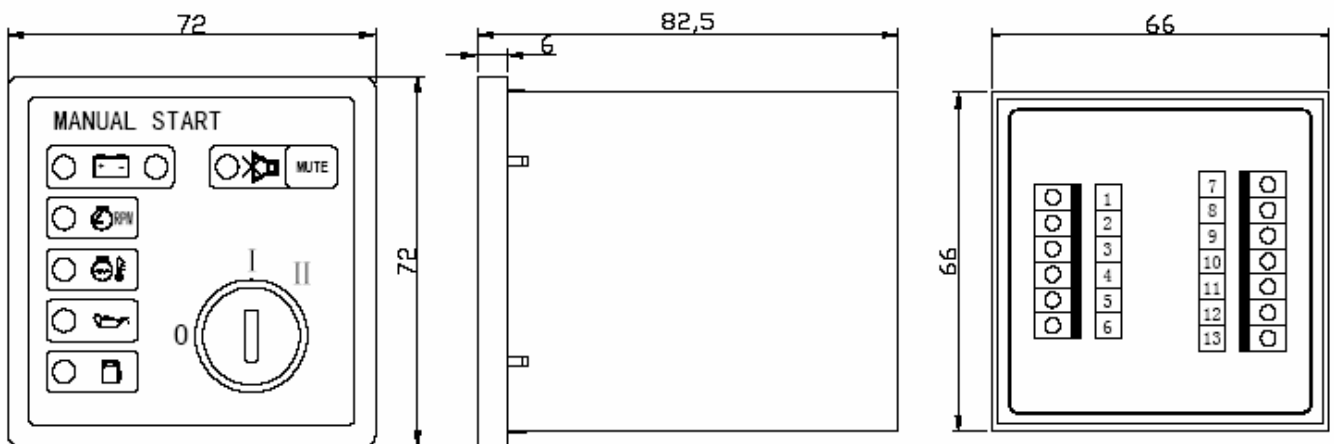
Controller Output: DC8~32V , 100mA

Operating Temperature: -30 ~70

Storage Temperature: -40 ~80

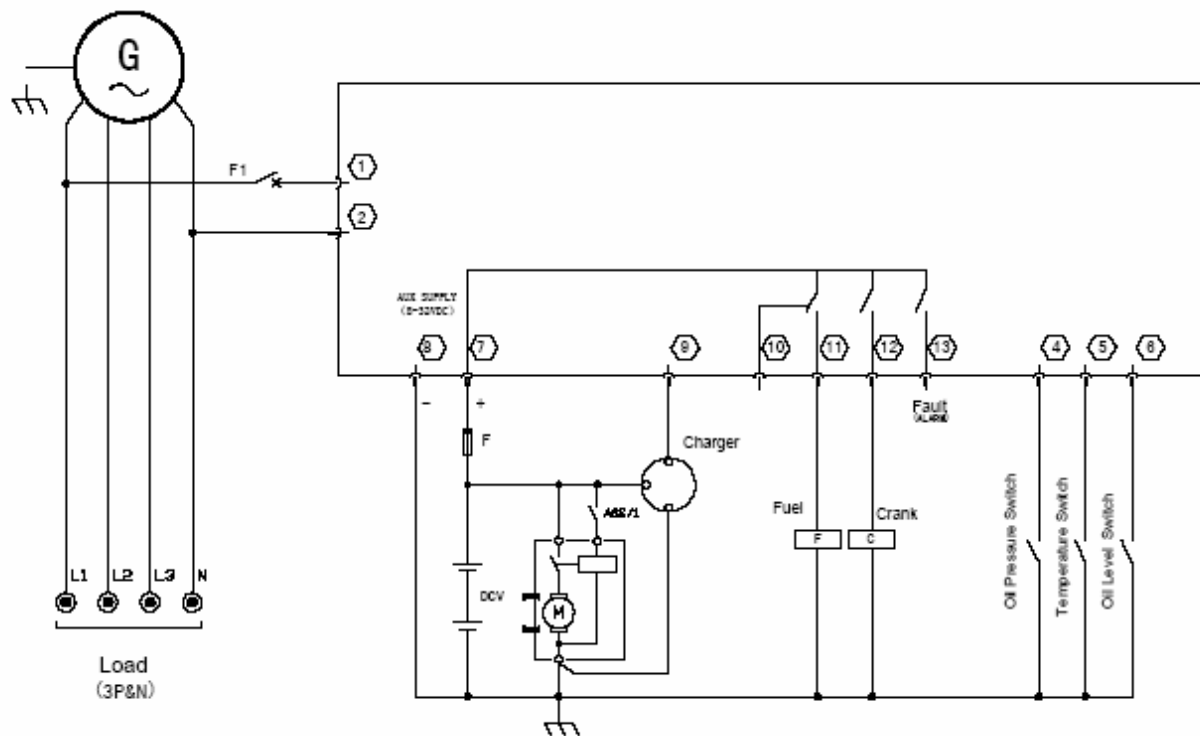
Dimension

Control Panel	W205mm × H156mm
Hatch For Installation	W186m × H137m
Deepness	D58.5mm (unconnected)



GU301A Genset Controller

Type Connecting Diagram:



Note: The Controller must be Grounded Well!